



BSA Venture Crew 820  
Dean Soderbeck, Advisor  
670 Tanglewood Drive  
St. Paul, MN 55126



## Scuba Crew 820 & GLSPS

Phalen Lake beach cleanup  
Beach House @ 1400 Phalen Drive  
St. Paul, MN

Saturday morning, May 27, 2017

Phalen Lake Beach House – 9:00am

1. Go over logistics and pair up divers for underwater clean up zones.
2. Locate underwater anchor pins w/ chains & connect them to the floating mooring ball. (20 to 23 feet deep)

12:00 noon lunch

Head home 1:30pm



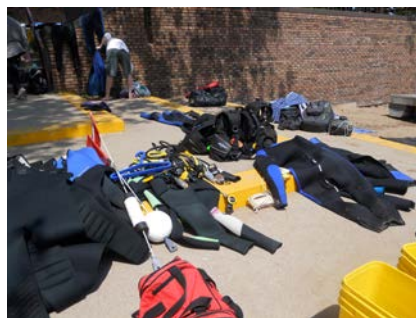
2016 Group photo after diving

**2016 beach cleanup report** – This was BSA Venture Crew 820's sixth annual Phalen Lake Spring Cleaning occurred on a beautiful sunny 80-degree day. The water was a warm 63 degrees at 23 feet below the surface as pairs of divers covered their assigned zones in depths from 4 feet to 23 feet deep. Nine divers from BSA Scuba Venture Crew 820 teamed up for the under water cleanup and had additional help from two scouts wading through shallow water picking up debris and broken glass left behind after the ice melt. We had an additional 2 parents that served as shore support. Three of the Venture Crew divers are also Great Lakes Shipwreck Preservation Society (GLSPS) members.

The majority of debris was found in the shallow water and out in the 20 foot depth. The visibility was better than last year at 8 to 10 feet. The divers found a lot of broken glass in the shallow water, aluminum and tin pop cans found in the deeper water. The divers also assisted the City of St. Paul by locating the mooring anchors and chains that hold the 16 by 24 foot floating swim platform. We roped the chains that are attached to the mooring anchors to large floats on the surface, so the cities life guards can finish connecting them to the swim raft in June.



Some of the debris found on the lake bottom



Equipment drying out after the dive



No hot chocolate needed this year, just hot dogs, chips, and juice.

Dean Soderbeck @ (651)-483-8596. [deansoderbeck@yahoo.com](mailto:deansoderbeck@yahoo.com)  
Adviser, BSA Venture Crew 820

Charter Partner; Northland Scuba, Inc.  
8779 Columbine Road, Eden Prairie, MN 55344  
952-949-0909 [www.northlandscuba.com](http://www.northlandscuba.com)



Great Lakes Shipwreck Preservation Society  
[www.facebook.com/glsp](http://www.facebook.com/glsp)

[www.glsp.org](http://www.glsp.org)

